

E by **DEK**



The **NEW** member of the E Solutions:
E by DEK

The total package makes the difference!
E by DEK – as individual as your requirements



The E-Solutions line from ASM is now complete!

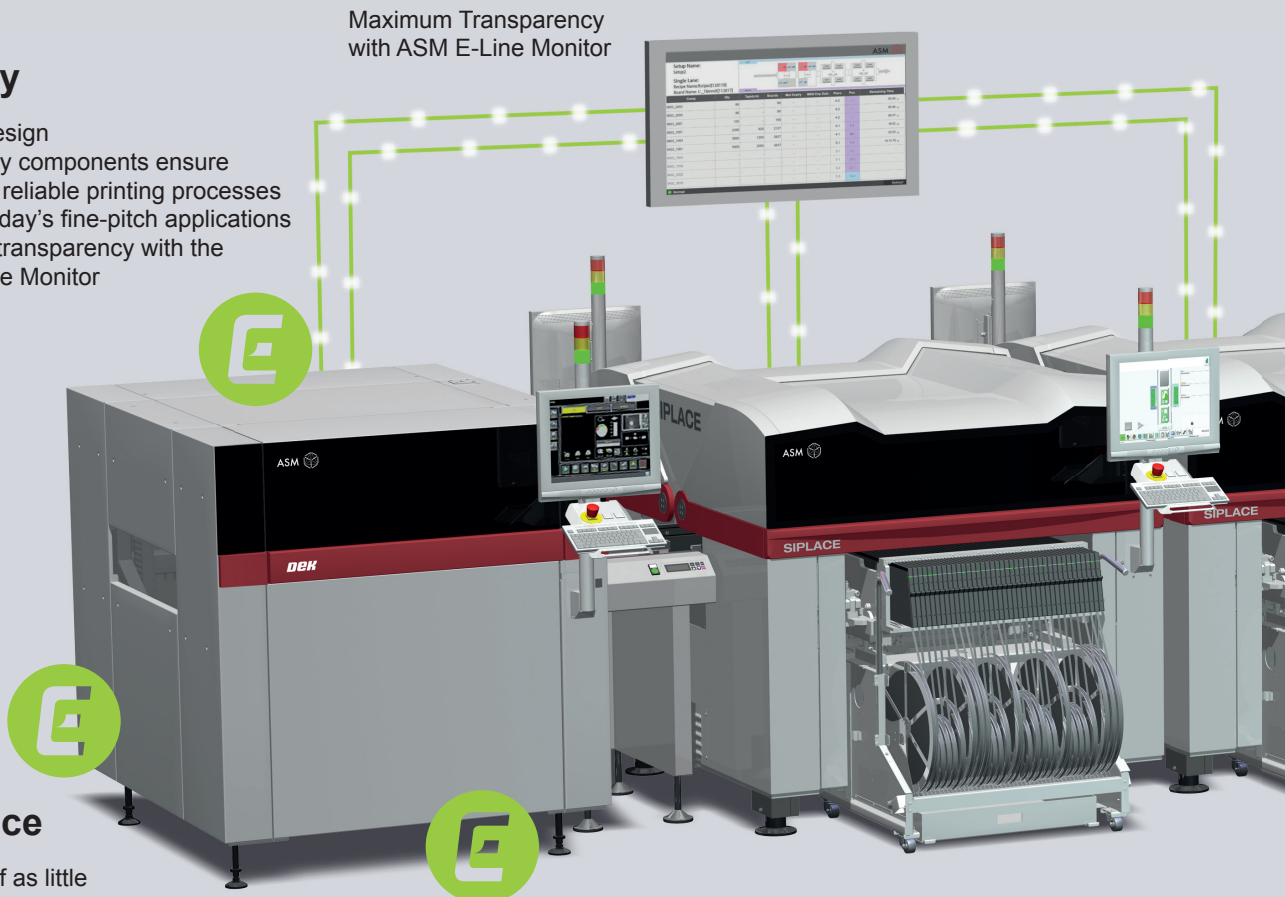
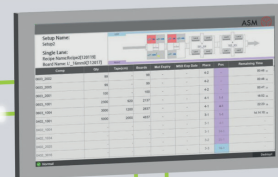
The E by SIPLACE has already set new standards in quality, performance and ease of use in the mid-speed placement segment. Now it is being joined by the ideal printer solution: E by DEK.

The result: E-Solutions, the all-round line solution for the mid-speed segment with integrated software solutions, line monitoring, traceability and fast, trouble-free setup processes for high-mix contract manufacturers and the production of small batches and prototypes.

E-quality

- Modular design
- High-quality components ensure stable and reliable printing processes even for today's fine-pitch applications
- Maximum transparency with the ASM E-Line Monitor

Maximum Transparency with ASM E-Line Monitor



E-performance

- Core cycle times of as little as 8 seconds
- Top ratings in speed, quality, changeover efficiency and repeat accuracy
- Application Packs available for any requirement

E-flexibility

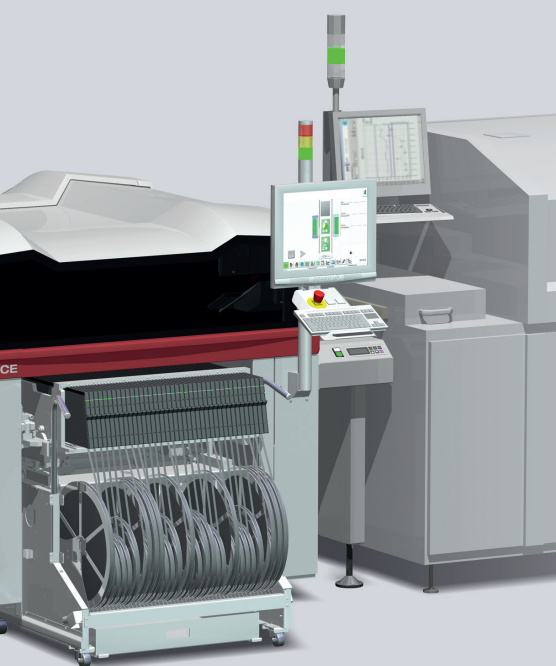
- Easy operation with intuitive user interface
- Broad selection of accessories ranging from software options to automatic stencil width adjustment
- Everything under control: Keep an eye on the whole line with the E-Line Monitor
- Patented clamping system
- Modular construction for maximum flexibility

E by DEK

E by DEK – as flexible as your applications

Is your production changing? Instead of having to invest in new printer models, the E by DEK always has the right answer thanks to a wide range of options. They make the E by DEK exceptionally flexible and protect your investment.

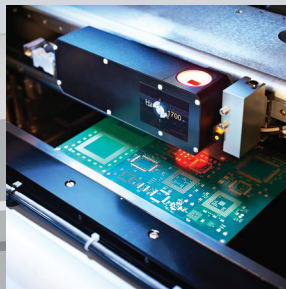
Always the right option for your applications:



Throughput

Turn your E by DEK into a high-speed solution

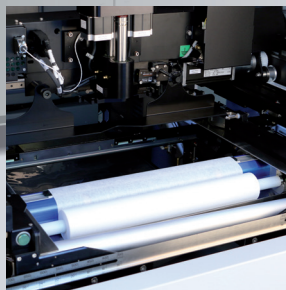
- Core cycle time as short as 8 seconds
- Dual-speed conveyor motor for soft stops
- State-of-the-art clamping and loading systems



Quality

Optimize your paste application process:

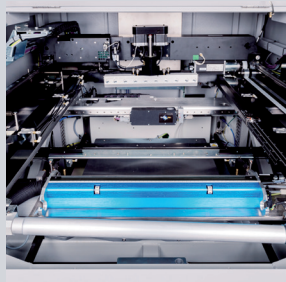
- Paste inspection system
- State-of-the-art process control software
- DEK Paste Roll Height Monitor



Flexibility

Unique in its class. E by DEK – as flexible as your applications

- Lateral clamping
- Dual-speed conveyor motor for soft stops
- Variable stencil loading
- Fast semi-automatic stencil loading



Long and heavy boards

In the mid-speed segment, only the E by DEK can print long and heavy boards:

- Boards with lengths of up to 620 mm
- DEK conveyor for heavy substrates (Heavy Board Rails)
- Camera-independent substrate stop (DEK Remote Board Stop)
- Long-board understencil cleaning (600 mm)

E by DEK

We know you'll love it.



E-facts

Machine performance	Specifications
Alignment accuracy	> 2.0 C _{mk} @ ±12.5 µm, (6 sigma)*
Machine capability	> 2.0 C _{mk} @ ±25 µm, (6 sigma)**
Shortest core cycle time (CCT)	11 seconds (8 seconds with option)
Operating system	Windows 7 Standard embedded
Squeegee pressure	Software-controlled, motorized with closed-loop feedback
Stencil positioning	Depth stop or semi-automatic stencil loading
Adjustable-width stencil mount	Variable stencil width adjustment for frame sizes ranging from 381 mm to 736 mm and thicknesses ranging from 25 mm to 38 mm
Understencil cleaning	DEK Interchangeable Under Stencil Cleaner (DEK IUSC) with programmable wet, dry and vacuum cleaning
Substrate size	50 mm (X) x 40.5 mm (Y) to 510 mm (X) x 508.5 mm (Y)
Substrate thickness	0.2 mm to 6 mm
Substrate weight	Up to 6 kg
Program creation	Less than 10 minutes
Substrate clamping	Over-the-top clamping Edge clamping (optional) Vacuum (optional)
Temperature and humidity sensors	Statistical recording of temperature and humidity readings
Paste verification	Hawkeye 750 (optional)

* Alignment accuracy is calculated with third-party QC-Calc software and comprised substrate loading/unloading, clamping, and the movement of camera systems and tables.

** Machine capability is calculated with third-party QC-Calc software and comprises substrate loading/unloading, clamping, and the movement of camera systems and tables.

The information in this brochure contains only general descriptions and/or performance features which may not always apply to concrete products as described or may change as a result of technical developments and advances. Any specific performance features and/or capabilities will only be binding if contractually agreed upon. All product names are brands or trademarks of ASM Assembly Systems GmbH & Co. KG or other suppliers. Their use by third parties may violate the rights of their owners.

Hilpert
electronics

Ihr Vertriebspartner/ Votre représentant:

Hilpert electronics AG
Täferstrasse 29
5405 Baden-Dättwil
Schweiz / Suisse

Tel: +41 56 483 25 25
Fax: +41 56 483 25 20
Mail: office@hilpert.ch
Web: www.hilpert.ch